

# Fantasia chromatica

Arranged as a lute duet by André Nieuwlaat Jan P. Sweelinck

1

10

D lute C [8]

15

20

25

30

35

40

45

50

55

60

65

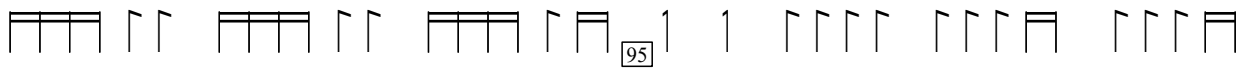
70

75

80

85

90



			a b a	a a		a a r	δ a δ r a
e r a r e	r a a	r e r	r	r	r r e	r a	a r e
r	δ r a r	δ	r a	r			



	a a r	δ a δ r a	r a a	b b a		r a
δ e b r e r	e	r r e	r a	r r a r e	a r r e	
φ e	r	r r e	r a	r e r a		



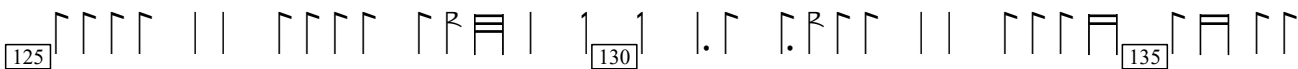
a r a	e r a r e	a a r a r	a r a	e r b e e	e f e r a a r e a r e φ r e
	r e e			e r r	e



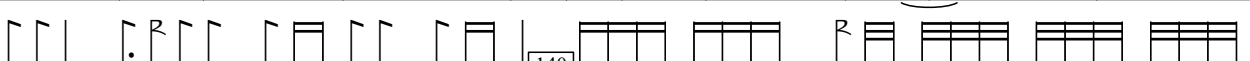
r a		a a r	δ a δ	r a	
e r a	r a	r e r a	δ r δ	a r e r e a r e	r e r
e r a	a				



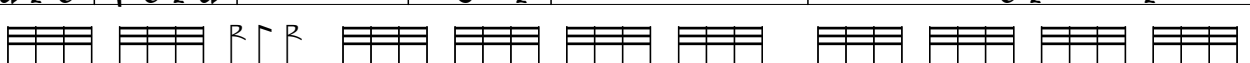
δ δ	r δ r a δ	r δ δ r a	δ a r a	e a	r r	r r a	e φ e
a	a a r	e a e r a	e r				



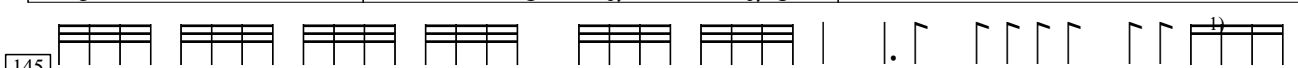
r a	a a	a a	δ r b	a	a r b
δ e r e	r e	r a r e	e [e]	r r a	δ r a r e r b r e a r e r
δ	r	r	e	r	r a r a r e r



	δ r a		a a	a r a	a a
r a r e	φ e r a	e a	r e r e	r e r e	r a e r b e r e r e r
		δ r			



r	b δ a δ b	b r e a r a r e a r	a b r a b r b
e b r e	e	r e δ a r e a δ	r e e r e b r a r e



a [δ a]	a a	r a r a r δ	δ δ	b a	a a a r δ a
a [b a]	[r a] a	r a r e a r	r	a r r	
	[e] a r e	a r e a r	a	r δ	e r

2)

1) Note substituted for note an octave lower than previous note as unplayable on this instrument.  
 2) 7 notes an octave lower in orig. (some unplayable).

150

R R R R R R R R R R	R R R R R R R R R R	R R R R R R R R R R	R R R R R R R R R R
r ar d a	d ar d ar e	e ar d ar	
e e ar	re ar		

155

R R R R R R R R R R	R R R R R R R R R R	R R R R R R R R R R	R R R R R R R R R R
r r a r e a r	r r a d r a	r a e r a e r a r e a e a	

160

R R R R R R R R R R	R R R R R R R R R R	R R R R R R R R R R	R R R R R R R R R R
a a r e a r e e e e	a r a r r r r r a a	r r a a a	r r a r d a r
r r e a r	e e a	e e r	e r r r

165

R R R R R R R R R R	R R R R R R R R R R	R R R R R R R R R R	R R R R R R R R R R
a a a r a r d	a a d r a r d a	r a r d a r	d r r r a r a
b a e e	r a a a	e e r r	a e e e b r b a e r r r g e d

170

R R R R R R R R R R	R R R R R R R R R R	R R R R R R R R R R	R R R R R R R R R R
a r a	a a e d r b a	r r a r r e a	d r b a e a r e a r e
r e		g e d r	r e a r e

175

R R R R R R R R R R	R R R R R R R R R R	R R R R R R R R R R	R R R R R R R R R R
r b a r d a	r a a r a	a d r a r d r	a a a d r b a
e	e d r	b a	r e r b r e a a a d r b a

180

185

R R R R R R R R R R	R R R R R R R R R R	R R R R R R R R R R	R R R R R R R R R R
a b r a	a a a e d r b	a b r	a r a a r a a a e
r r r	r	r r	r r r e r r r r

190

195

R R R R R R R R R R	R R R R R R R R R R	R R R R R R R R R R	R R R R R R R R R R
a b r a	a a a e d r b	a b r	a r a a r a a a e
r r r	r	r r	r r r e r r r r